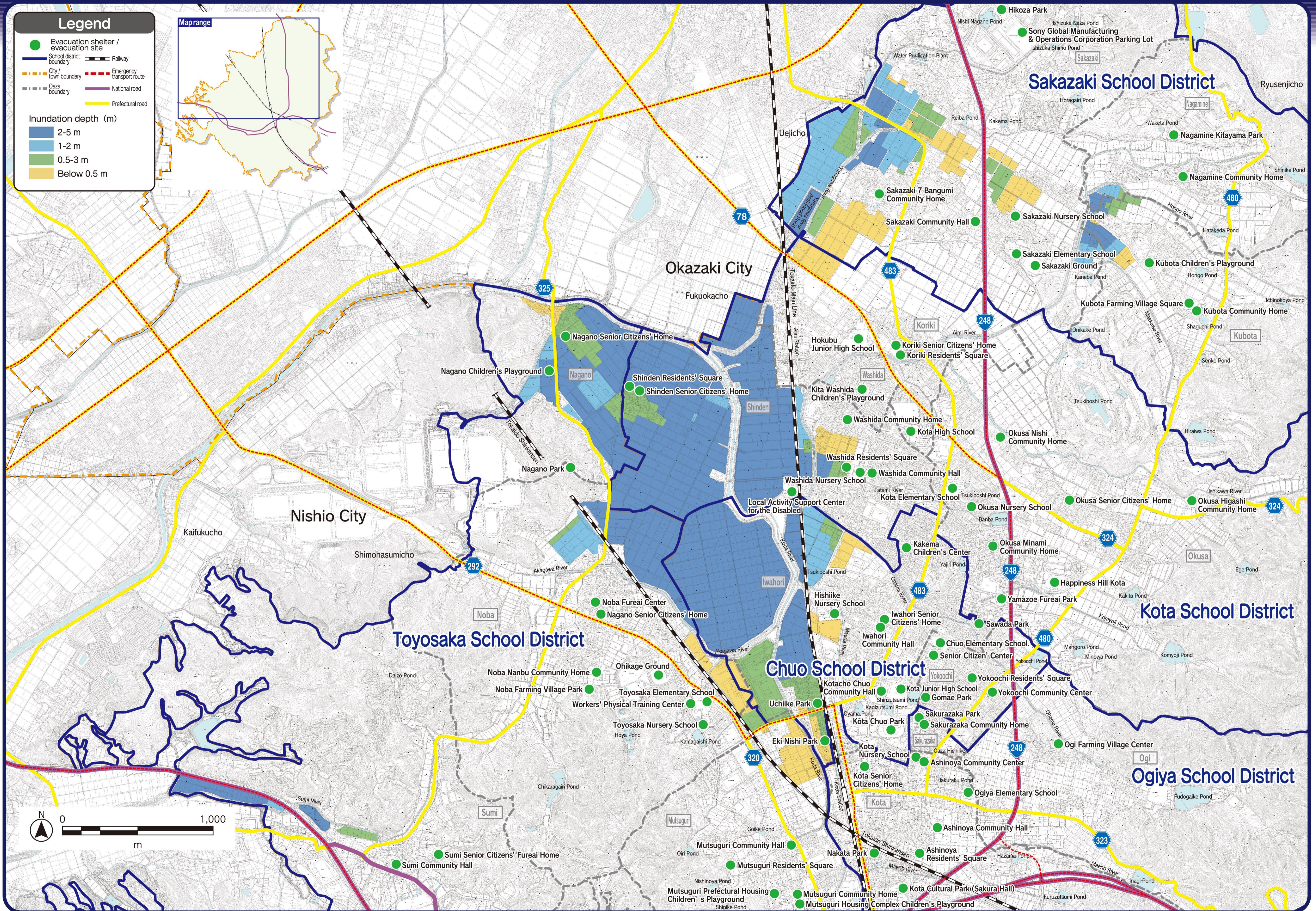


# Inundations Record Map in Koda Town (The heavy rain at the end of August 2008)



In preparing this map, the 1/2,500 urban planning base map (2 TO No. 203) published by the Okazaki City Government was used with the consent of the city, the 1/2,500 urban planning base map (SEI-TO No. 51) published by the Nishio City Government was used with the consent of the city, and the urban planning base map (2 TO SANTO (meas.) No. 4-5) published by the Regional Union of East Mikawa was used with the consent of the head of the Union.