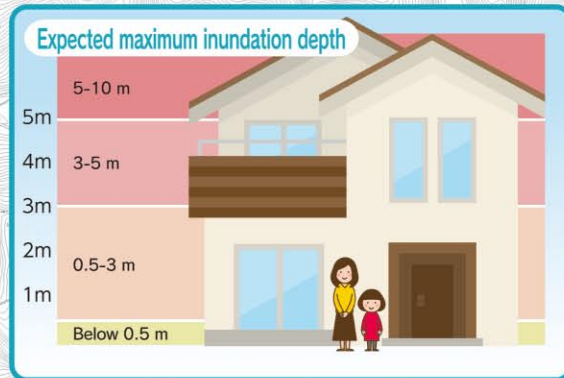
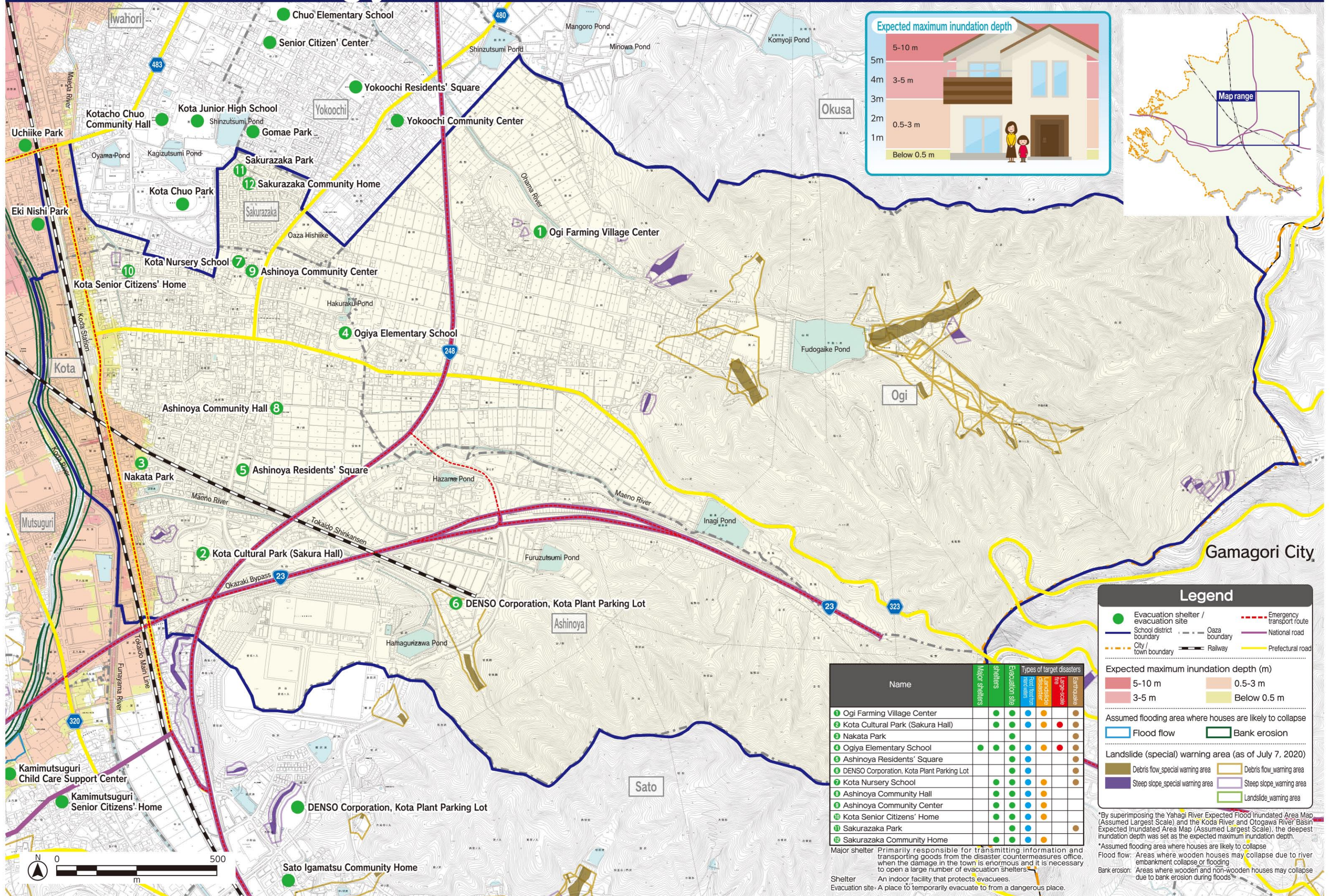


Kota Town Disaster Prevention Map Ogiya School District



Legend

- Evacuation shelter / evacuation site
- School district boundary
- Oaza boundary
- City / town boundary
- Emergency transport route
- National road
- Prefectural road
- Railway

Expected maximum inundation depth (m)

- 5-10 m
- 3-5 m
- 0.5-3 m
- Below 0.5 m

Assumed flooding area where houses are likely to collapse

- Flood flow
- Bank erosion

Landslide (special) warning area (as of July 7, 2020)

- Debris flow_special warning area
- Debris flow_warning area
- Steep slope_special warning area
- Steep slope_warning area
- Landslide_warning area

Name	Major shelters	Shelters	Evacuation site	Types of target disasters
				Flood flow Landslide Large-scale fire Earthquake
1 Ogi Farming Village Center	●	●	●	● ● ● ●
2 Kota Cultural Park (Sakura Hall)	●	●	●	● ● ● ●
3 Nakata Park	●	●	●	● ● ● ●
4 Ogiya Elementary School	●	●	●	● ● ● ●
5 Ashinoya Residents' Square	●	●	●	● ● ● ●
6 DENSO Corporation, Kota Plant Parking Lot	●	●	●	● ● ● ●
7 Kota Nursery School	●	●	●	● ● ● ●
8 Ashinoya Community Hall	●	●	●	● ● ● ●
9 Ashinoya Community Center	●	●	●	● ● ● ●
10 Kota Senior Citizens' Home	●	●	●	● ● ● ●
11 Sakurazaka Park	●	●	●	● ● ● ●
12 Sakurazaka Community Home	●	●	●	● ● ● ●

Major shelter - Primarily responsible for transmitting information and transporting goods from the disaster countermeasures office, when the damage in the town is enormous and it is necessary to open a large number of evacuation shelters.

Shelter - An indoor facility that protects evacuees.

Evacuation site - A place to temporarily evacuate to from a dangerous place.

In preparing this map, the 1/2,500 urban planning base map (2 TO No. 203) published by the Okazaki City Government was used with the consent of the city, the 1/2,500 urban planning base map (SEI-TO No. 51) published by the Nishio City Government was used with the consent of the city, and the urban planning base map (2 TO SANTO (meas.) No. 4-5) published by the Regional Union of East Mikawa was used with the consent of the head of the Union.