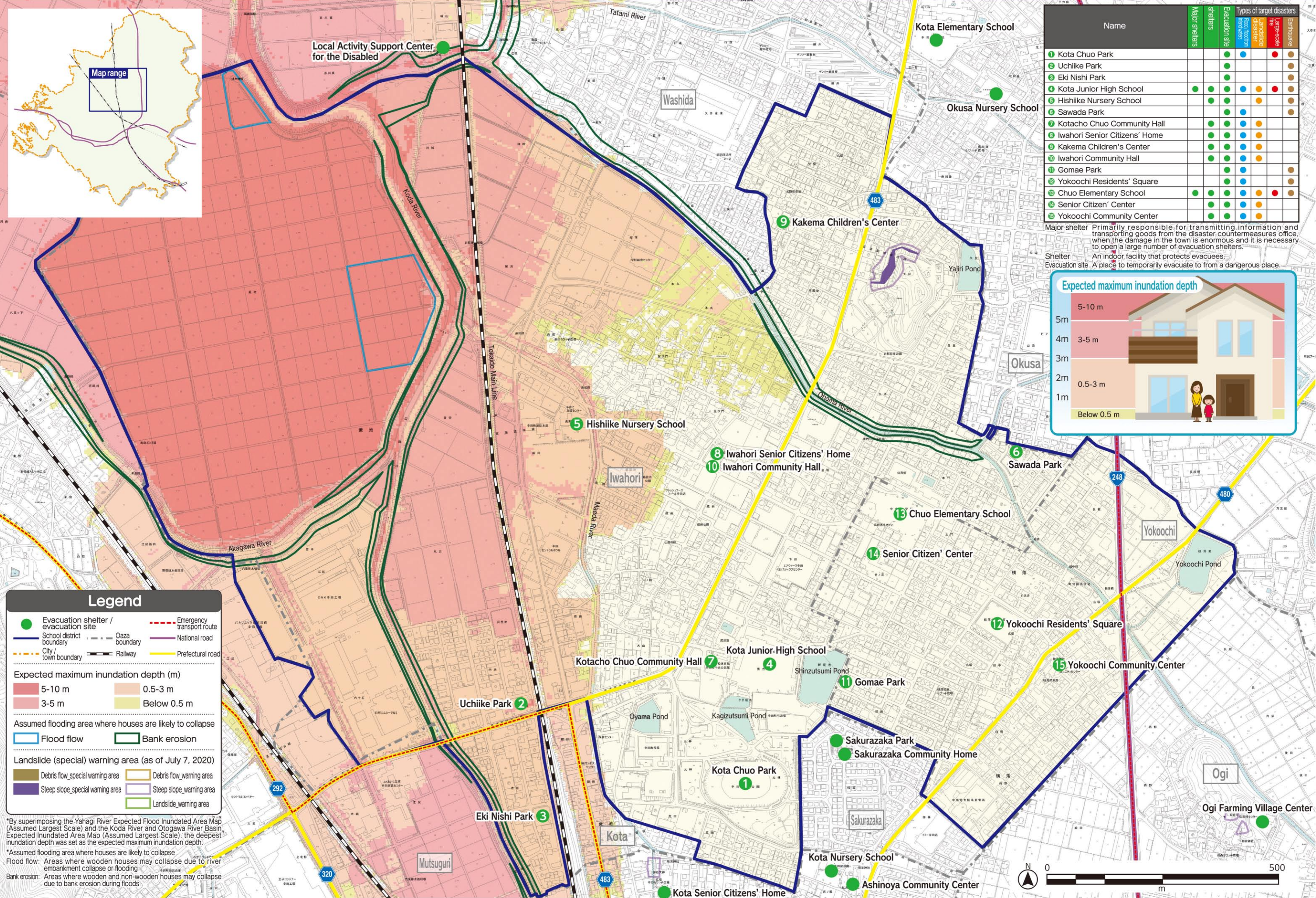


Kota Town Disaster Prevention Map **Chuo School District**



*By superimposing the Yahagi River Expected Flood Inundated Area Map (Assumed Largest Scale) and the Koda River and Otagawa River Basin Expected Inundated Area Map (Assumed Largest Scale), the deepest inundation depth was set as the expected maximum inundation depth.

*Assumed flooding area where houses are likely to collapse

Flood flow: Areas where wooden houses may collapse due to river embankment collapse or flooding.

Bank erosion: Areas where wooden and non-wooden houses may collapse due to bank erosion during floods.

In preparing this map, the 1/2,500 urban planning base map (2 TO No. 203) published by the Okazaki City Government was used with the consent of the city, the 1/2,500 urban planning base map (SEI-TO No. 51) published by the Nishio City Government was used with the consent of the city, and the urban planning base map (2 TO SANTO (meas.) No. 4-5) published by the Regional Union of East Mikawa was used with the consent of the head of the Union.